



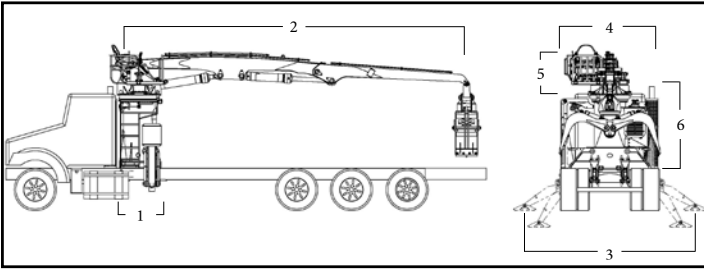
XLT 170

Truck Mounted Material Handler



The Lemco Model XLT 170, Knuckle Boom Loader, is the heavy lift champion of the Lemco line-up. The 170 is designed for heavy duty logging, pole handling and construction applications.

XLT 170 SPECIFICATIONS



| DIMENSIONS - 23' Boom Option | | | |
|---|--|---|----------------|
| 1 | 41.125" (104 cm) | 4 | 8.0' (2.44 m) |
| 2 | 23' (7.0 m) | 5 | 38.25" (97 cm) |
| 3 | Optional - 12.0' (3.6 m), 14.0' (4.3 m) or 16.0' (4.9 m) | 6 | 73.0" (185 cm) |
| Loader weight = 9,600 lbs. (4,354 kg) - Less Attachment | | | |

BOOM DATA

- Highest quality, high tensile steel.
- Fabricated Boom Structure.
- Stress proof steel pins with aluminized bronze bushings.
- Maximum lifting height of 30' @ 7' Radius (may vary, depending upon type of carrier & optional boom length).

HYDRAULICS

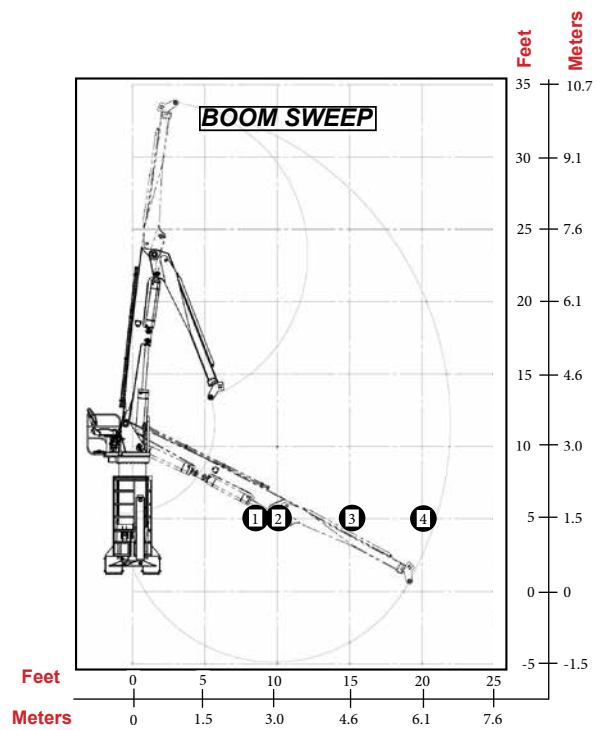
- Variable and load sense pump.
- Load sense, pressure compensated directional valve.
- Hydraulic pilot controls (joysticks and foot pedal).
- 50 Gallon Hydraulic Reservoir with site gauge, thermometer, in-tank screen filters & stainless steel coil for cold weather heating.
- 3850 PSI Operating System.
- Stack valves.
- Main relief, anti-cavitation and port relief are used for precise control and unit protection.
- High pressure filters.
- Return line filter.
- Long-lasting hoses - 4 braid on pressure lines, main lift and jib cylinder.

CYLINDERS

- Main Cylinder: 6" bore x 4" chrome steel rod.
- Jib Cylinder: 6" bore x 4" chrome steel rod.
- Stabilizer cylinders: 4" bore x 52" stroke x 2" chrome steel rod.
- Cylinder wear rings on pistons & glands.
- Rods with heavy chrome plating.

TOWER / STABILIZERS

- "A" Frame type stabilizers with unique, out and down design for maximum stability.
- Three stabilizer spread options - 12', 14' or 16'.
- Easy access to hydraulic swivel manifold & hoses.



LIFT CAPACITY 23' (7.1m) Boom Option, Less Attachment (Measured at 5' above ground level)

| RADIUS | LIFT | RADIUS | LIFT |
|-------------|------------------------|-------------|-----------------------|
| 8' (2.4 m) | 20,000 lbs. (9,090 kg) | 20' (6.1 m) | 9,200 lbs. (4,181 kg) |
| 10' (3.0 m) | 18,700 lbs. (8,500 kg) | | |
| 15' (4.6 m) | 12,400 lbs. (5,636 kg) | | |

OPERATOR PLATFORM

- Full support seat positioned for maximum visibility.
- Two joystick operating system.
- Front operator's guard.
- Dual access ladders.
- Lights mounted to platform.

SWING SYSTEM

- Continuous rotation
- 30" Diameter external tooth bearing.

LOADER OPTIONS

- Dead Heel(s).
- Live Heel.
- Platform and/or boom lights.
- Joystick hand warmers.
- Custom colors.
- Horn.

GRAPPLE OPTIONS

- Bypass log grapples.
- Bypass log grapples with protective wraps (for pole handling).
- Butt styled grapples.
- Trash (municipal waste) grapples.



401 W. lone Ave. • Hill City, MN 55748 • lemcohydraulics.com • Phone: (218) 697-2694

We are TENAMEC—where tenacious and mechanical fuse. TENAMEC is proud to create the world's most durable material handling solutions under the Builtrite, SAS Forks and Lemco brands.

